



# GSI *Creos*

## Product Line

- Ingredients for Personal Care
- Beauty Care Goods



# GSI Creos

Closer to you , newer for you

GSI Creos started out with textiles, a product field intimately connected to you, as its core business. Our expansion into other business fields, including ingredients for personal care, beauty care goods.

We are committed to new area of business designed to pursue lifestyle quality for the times and realize the happiness of all those who create value with us.

GSI Creos works in collaboration with leading manufacturers to develop and bring to market a range of specialty products.

With over 20years experience in personal care field and global network, we always offering the material with uniqueness & forefront concepts.

GSI Creos has and always will be there with you.

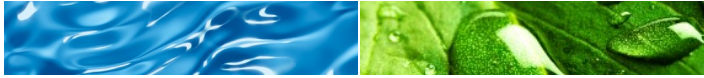
Produce The Future





## INGREDIENTS FOR PERSONAL CARE PRODUCTS

Product Name	INCI Name	Efficacy	Feature
<b>ATELOCOLLAGEN SS 0.3%</b>	SUCCINOYL ATELOCOLLAGEN (and) DISODIUM PHOSPHATE (and) POTASSIUM PHOSPHATE (and) WATER	Moisturization	Atelocollagen is a safe and high biocompatible collagen by treating Native collagen with enzyme or alkali. Atelocollagen SS is Succinylated atelocollagen which soluble in water at pH 5-12
<b>ATELOCOLLAGEN SS 1%</b>	SUCCINOYL ATELOCOLLAGEN (and) DISODIUM PHOSPHATE (and) POTASSIUM PHOSPHATE (and) WATER	Moisturization	Atelocollagen is a safe and high biocompatible collagen by treating Native collagen with enzyme or alkali. Atelocollagen SS is Succinylated atelocollagen which soluble in water at pH 5-12
<b>ATELOCOLLAGEN SS-V</b>	SUCCINOYL ATELOCOLLAGEN (and) DISODIUM PHOSPHATE (and) POTASSIUM PHOSPHATE (and) CELLULOSE GUM (and) PHENOXYETHANOL (and) WATER	Moisturization	Atelocollagen SS-V is Succinylated atelocollagen with viscosity modifier which keep the viscosity in the formulation.
<b>ATELOCOLLAGEN MS</b>		Moisturization	Atelocollagen MS is Succinylated Myristylated atelocollagen which has emulsifiability.
<b>MARINE MUCIN 0.3%</b>	GLYCOSAMINOGLYCANS(and) PHENOXYETHANOL(and)WATER	Enhance Sensory profile, Moisturization	Marine mucin is a high viscous glycoprotein ( Gel-like ) includes over 2 million molecules. Marin Mucin has a high moisturizing and protection property. Also oftenly used for sensory modifier.
<b>MARINE MUCIN 1%</b>	GLYCOSAMINOGLYCANS(and) PHENOXYETHANOL(and)WATER	Enhance Sensory profile, Moisturization	Marine mucin is a high viscous glycoprotein ( Gel-like ) includes over 2 million molecules. Marin Mucin has a high moisturizing and protection property. Also oftenly used for sensory modifier.
<b>SWEETCHERRY EXTRACT (Sakuranbo Koken)</b>	PRUNUS AVIUM(SWEETCHERRY) FRUIT EXTRACT (and) BUTYLENE GLYCOL (and) WATER	Moisturization, Keratin10 and Caspase-14 up-regulation	Sweet cherry extract is extracted from Fruit of Sweet Cherry. The extract contains high level of Aspartic Acid and Sugars. Superior moisturization
<b>PEAR TWIG EXTRACT (La France Koken)</b>	PYRUS COMMUNIS (PEAR)TWIG EXTRACT (and) BUTYLENE GLYCOL (and) WATER	Skin Brightening	Pear Twig Extract is almost pure $\beta$ - Arbutin (>99%). Also it has residue of polyphenols. Due to the synergy effect from $\beta$ - Arbutin and polyphenols, Pear Twig Extract showed superior skin brightening effect than pure $\beta$ - Arbutin.



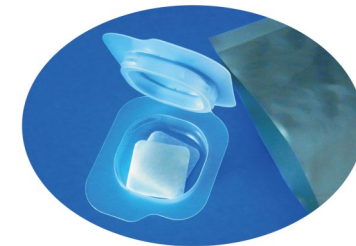
## INGREDIENTS FOR PERSONAL CARE PRODUCTS

Product Name	INCI Name	Efficacy	Feature
<b>PLATINUM MARINE COLLAGEN</b>	PLATINUM POWDER (and) BUTYLENE GLYCOL (and) SODIUM HYALURONATE (and) HYDROLYZED COLLAGEN (and) SODIUM BICARBONATE (and) CELLULOSE GUM (and) WATER	Penetration, Moisturization, Anti-Oxidation	Marine-Collagen combined with platinum particle. Better penetration to stratum corneum. Better moisturizing effect than collagen.
<b>ETERNA S30</b>	PLATINUM POWDER (and) HYDROLYZED SILK (and) SODIUM BICARBONATE (and) WATER	Repair of hair cuticle, Improve hair texture	Silk protein combined with platinum particle. Better penetration into hair shaft, Repairs hair cuticle, makes shiny hair.
<b>ETERNA S10</b>	PLATINUM POWDER (and) HYDROLYZED SILK (and) SODIUM BICARBONATE (and) WATER	Repair of hair cuticle, Improve hair texture	Silk protein combined with platinum particle. Better penetration into hair shaft, Repairs hair cuticle, makes shiny hair.
<b>FS500-PKN</b>	CAMELLIA SINENSIS LEAF EXTRACT (and) PROPYLENE GLYCOL (and) WATER	Deodorant	Green tea leaf dry distilled solution for deodorant
<b>GEL-ISOD</b>	PENTAERYTHRITYL HYDROGENATED ROSINATE (and) OCTYLDODECYL ISOSTEARATE	Lustor, Gloss	GEL-ISOD, a new cosmetic raw material is a highly viscous oil component and has brilliant luster/gloss of high quality that has recently been sought for make-up products, and also can provide excellent pigment dispersibility, good compatibility with other oils, desirable stability, and better adherence to the skin as well. This makes a good hydrate, and slides well on the lip while making a thicker film.
<b>AQUA CERIA</b>	CERIUM OXIDE, PLATINUM POWDER, WATER	Sunscreen	Water dispersion of Cerium Oxide. Easy to make mist, lotion, essence type product without white residue. Able to block both UVA and B.
<b>CERIA POWDER</b>	CERIUM OXIDE, PLATINUM POWDER, DIMETHICONE	Sunscreen	Cerium Oxide powder for foundation, cream type products. Able to block both UVA and B. Water proof.



## BEAUTY CARE GOODS

Product Name	Efficacy	Feature
<b>PERFECT AQUA GEL SHEET</b>	Anti-Wrinkle, Moisturization	Water-soluble sheet which turns into gel when dissolved in water. Contains collagen derived from fish, and squalane. Free of preservatives. Can also be used with your favorite skin toner.
<b>Nanofiber Face Mask</b>	water retention, water release, better adhesion to skin	Sheet mask for face with world's first 700nanometer ultra-fine polyester fiber "NANOFRONT™". Very gentle on the skin, better water absorption, better water release, better adhesion on skin.
<b>Nanofiber Under Eye Mask</b>	water retention, water release, better adhesion to skin	Sheet mask for under eye area with world's first 700nanometer ultra-fine polyester fiber "NANOFRONT™". Very gentle on the skin, better water absorption, better water release, better adhesion on skin.
<b>Nanofiber Face Washing Cube</b>	Care for clogged pores and rough dead skin	World class product revolution let you enjoy smooth skin!. Ultra-fine polyester fiber "NANOFRONT™" easily care clogged pores and rough dead skin. For Facial use.
<b>Nanofiber Body Washing Mitten</b>	Care for clogged pores and rough dead skin	World class product revolution let you enjoy smooth skin!. Ultra-fine polyester fiber "NANOFRONT™" easily care clogged pores and rough dead skin. For body and decollete use.
<b>Solotex Powder Puff</b>	Exellent skin feel	SOLOTEX™ is PTT fiber with spring-like morecular structure. This special fiber has soft supple touch and feel, gentle sure stretch, shape-retaining resilience.



# GSI Distribution Network



(Head Office)

**GSI Creos Corporation PCI Sales Section**

**Contact : Yuto Tsutsui**

Kudan-minami 2-3-1,Chiyoda-ku,Tokyo 102-0074, Japan

Tel : +81 3 5211 1850 Fax : +81 3 5211 1903

Email: y.tsutsui@gsi.co.jp

(North America)

**GSI EXIM AMERICA,INC.**

**Contact :Yuto Tsutsui**

1065Avenue of Americas, 32nd FL. New York NY10018

Tel (direct) : 917 256 6212 Fax : 212 684 5846

Email : y.tsutsui@gsi.co.jp

(Europe)

**GSI Europe GmbH**

**Contact :Shigeaki Komatsu**

Louise Dumont Strasse 31

Dusseldorf 40211 Germany

Tel : +49 (0)211 16659414 Fax : +49(0)211 357035

Email: komatsu@gsieurope.de

(Asia Pacific)

**China : GSI China**

**Contact: Yuan Jihong**

Tel : +86 13818800922

Email : yuanjihong@gsi-sh.com

**Korea : GSI Korea**

**Contact: Sean H. Inn**

Tel : +82 2 2777 4885

Email : sean@gsicreos.co.kr

**Thailand : GSI Trading Bangkok**

**Contact: Namtip Ruangnon**

Tel : +66 2255 1882

Email : namtip@gsi.com.hk

**Indonesia : PT Rena haniem Mulia**

Tel: +62 21 7588 0050

Email: endah.prasetyorini@renahaniem.co.jp

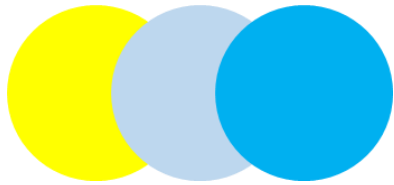


The background features a bright sunburst effect in the upper right corner, with rays of light radiating across the frame. The lower portion of the image is dominated by several thick, curved bands in shades of cyan, yellow, and light blue, creating a sense of motion and energy.

# AQUA CERIA

New Generation Water Dispersible Sunscreen

GSI **Creos**



# What is ACQUA CERIA?

Inquiry ?→ **GSI EXIM AMERICA, INC.**  
E-mail : y.tsutsui@gsi.co.jp

## INTRODUCTION

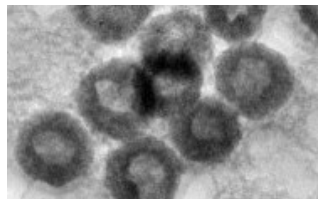
Aqua Ceria is a new ultraviolet scattering agent from Cerium oxides. Using original technology, we successfully disperse cerium oxide into water. Cerium oxide is coated by platinum. Which gives high water dispersibility and stability.

## FEATURES

- Transparent appearance  
The appearance of AQUA CERICA is just like water. That makes transparency of the final formulation. Off cause it promises the transparency on the skin as well.



Appearance of AQUA CERIA



Microscope picture of the particles



- Easy to disperse in water.  
AQUA CERIA is water base ingredient without viscosity. Easy to make spray or mist type formulation with smooth and light skin feeling.



Lotion type

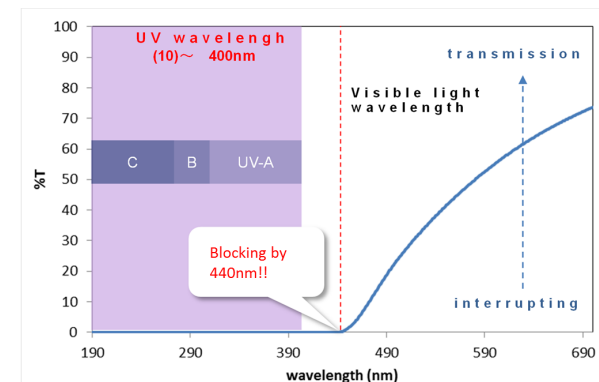


No greasy feel !



Mist type

- High UV scattering efficacy.  
AQUA CERIA has wide range of UV scattering efficacy. Able to block both UVA and UVB.





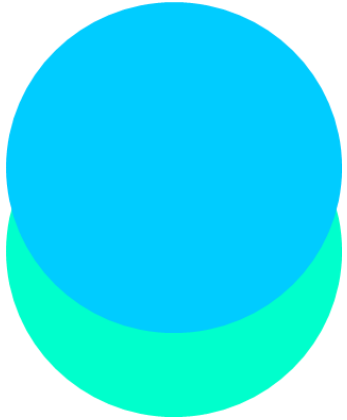


# Fresh-E

Dry distilled solution from Green Tea

## Product Features

- Made from dry distillation (Free of terpene, chlorophyll, resin)
- Strong deodorant efficacy
- Approved for Quasi-Drug in Japan



# GEL-ISOD

Oil of High viscosity with the highest refractive index



- Improves the luster / gloss of make-up products
- Less wax required due to hardness up
- Works to disperse pigments
- Compatible with other oil
- Good skin adhesion
- Makes hydrate
- Slides smoothly , making thick film
- No taste, no odor, pale yellow viscous liquid
- High refractive index: 1.4957 at 20 degree C
- High viscosity: 5,500 mPa.s at 20 degree C





# Perfect Aqua Gel Sheet

Inquiry ?→ **GSI EXIM AMERICA,INC.**  
E-mail : [y.tsutsui@gsi.co.jp](mailto:y.tsutsui@gsi.co.jp)



**1** Drop an appropriate amount of skin toner onto the sheet.  
(Can be combined with any type of skin toner)

**2** Mix with your finger until completely dissolved.

\* For two sheets, use around 0.5-1 mL of skin toner.



**3** Spread the mixture on the desired areas, or over the entire face.

*Using freeze drying technology,  
collagen is successfully sealed inside  
the sheet and kept fresh*

